

STROMER REALTY COMPANY OF CALIFORNIA



194.56 Acres Recreational,
Cattle, & Potentail Mining
Jackson, Ca 95685
Lic. 01050665



The information contained in this brochure is from reliable sources and is believed to be correct, but is NOT guaranteed.

591 Colusa Ave., Yuba City, CA 95991 | 530.671.2770 | www.stromerrealty.com

Logan Taylor
530.701.2680(m)
logan@stromerrealty.com
DRE # 02062799



Nick Wallander
530.588.1430 (m)
nick@stromerrealty.com
DRE # 02167571

LOCATION: The property is located in Jackson, California. It is only a five-minute drive from downtown Jackson, and a three-minute drive from Sutter Hill, California.

INGRESS/EGRESS: This ranch can be easily accessed via Jackson Gate Road.

APN'S: 044-010-091, 092, 093, 095, & 096

MINING: This property was once known as the Oneida Mine, it was an operating mine from the 1860s to 1914. Its primary ore was gold and studies show that there is still a significant amount on this property. The mining shafts go as deep as 2,250 feet connecting it with the Mother Lode vein.

MINERAL RIGHTS: This ranch is a total of 194.56 acres but includes mineral rights for 335 acres.

SOILS: Soils on this ranch consists of Auburn Silt loam, Exchequer, and Supan Cobbly loam making it ideal for cattle grazing and growing volunteer grains. (See attached soil map)

WATER: There are several springs including one that feeds into a watering trough.

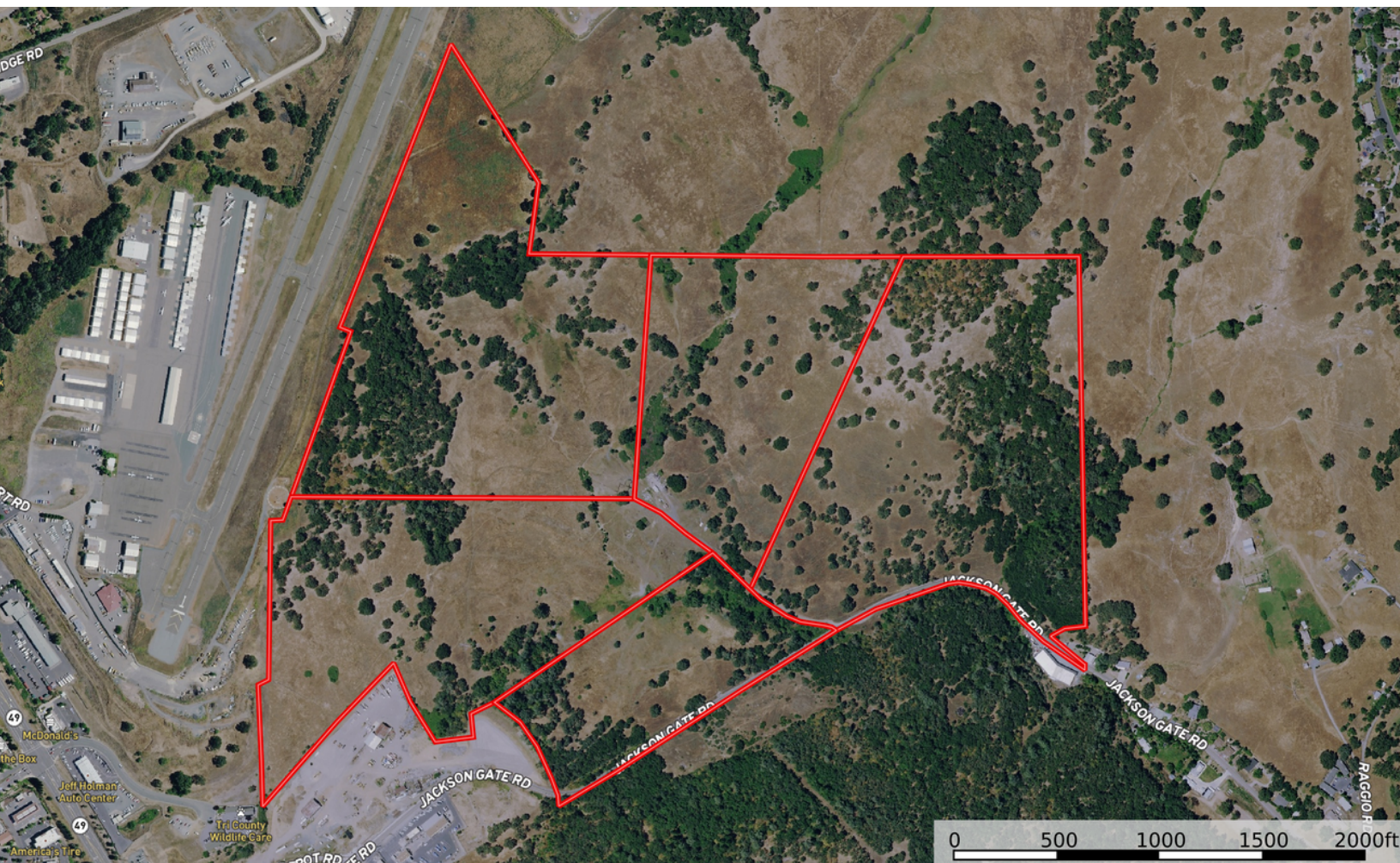
COMMENTS: Beyond cattle grazing and recreation the Oneida Ranch also offers great potential for a homesite, land development, and mining. You could own this piece of California history!

PRICE: \$1,125,000

Logan Taylor
530.701.2680(m)
logan@stromerrealty.com
DRE # 02062799



Nick Wallander
530.588.1430 (m)
nick@stromerrealty.com
DRE # 02167571



The information contained in this brochure is from reliable sources and is believed to be correct, but is NOT guaranteed.

591 Colusa Ave., Yuba City, CA 95991 | 530.671.2770 | www.stromerrealty.com

Logan Taylor
530.701.2680(m)
logan@stromerrealty.com
DRE # 02062799



Nick Wallander
530.588.1430 (m)
nick@stromerrealty.com
DRE # 02167571



The information contained in this brochure is from reliable sources and is believed to be correct, but is NOT guaranteed.

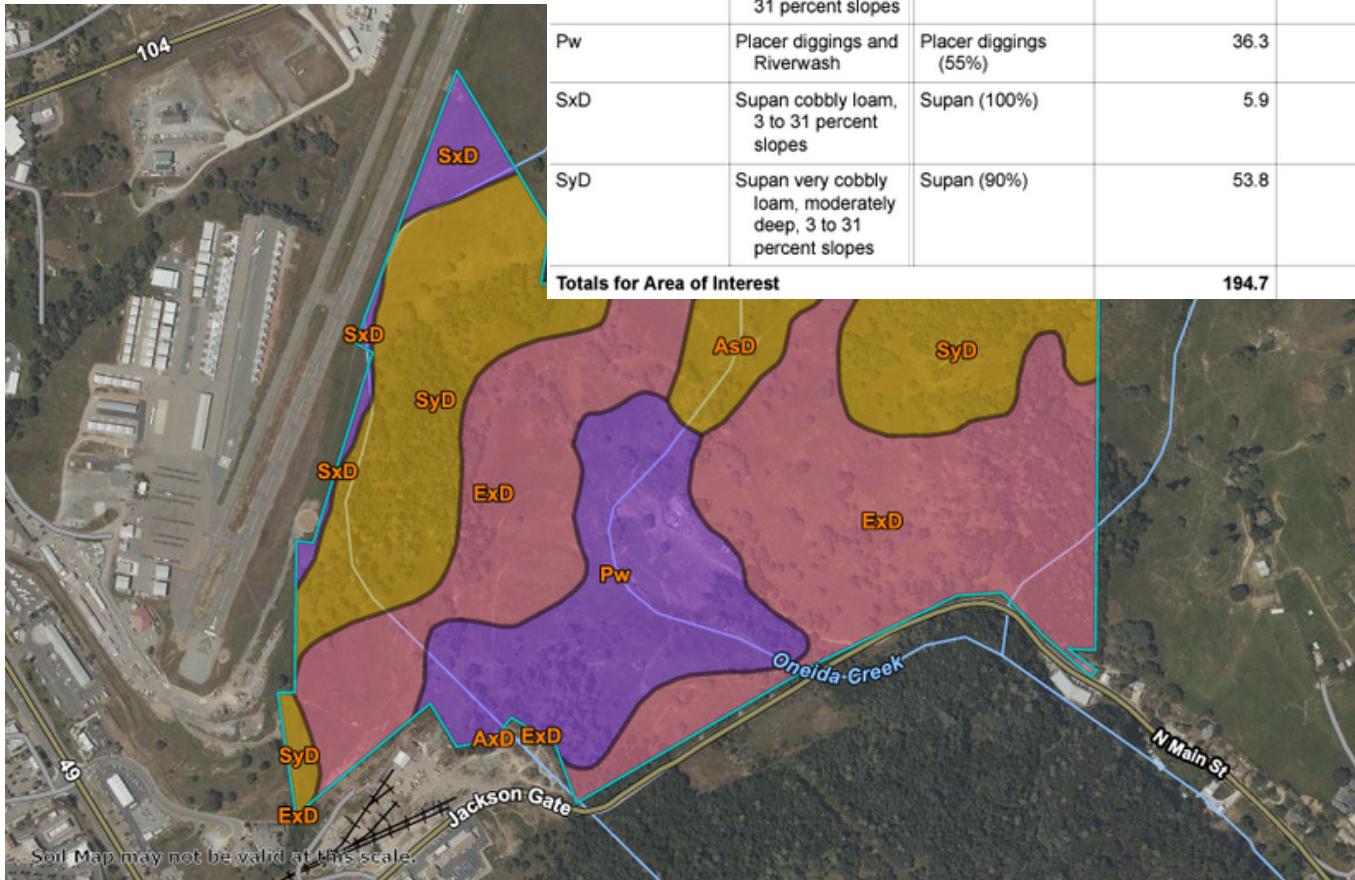
591 Colusa Ave., Yuba City, CA 95991 | 530.671.2770 | www.stromerrealty.com

Logan Taylor
530.701.2680(m)
logan@stromerrealty.com
DRE # 02062799



Nick Wallander
530.588.1430 (m)
nick@stromerrealty.com
DRE # 02167571

Map unit symbol	Map unit name	Component name (percent)	Acres in AOI	Percent of AOI
AsD	Auburn very rocky silt loam, 3 to 31 percent slopes	Auburn (85%)	7.7	4.0%
AxD	Auburn-Argonaut very rocky silt loams, 3 to 31 percent slopes	Auburn (54%) Argonaut (30%)	0.0	0.0%
ExD	Exchequer and Auburn very rocky loams, 3 to 31 percent slopes	Exchequer (45%)	91.0	46.8%
Pw	Placer diggings and Riverwash	Placer diggings (55%)	36.3	18.6%
SxD	Supan cobbly loam, 3 to 31 percent slopes	Supan (100%)	5.9	3.0%
SyD	Supan very cobbly loam, moderately deep, 3 to 31 percent slopes	Supan (90%)	53.8	27.6%
Totals for Area of Interest			194.7	100.0%



The information contained in this brochure is from reliable sources and is believed to be correct, but is NOT guaranteed.



The information contained in this brochure is from reliable sources and is believed to be correct, but is NOT guaranteed.

591 Colusa Ave., Yuba City, CA 95991 | 530.671.2770 | www.stromerrealty.com



The information contained in this brochure is from reliable sources and is believed to be correct, but is NOT guaranteed.

591 Colusa Ave., Yuba City, CA 95991 | 530.671.2770 | www.stromerrealty.com



The information contained in this brochure is from reliable sources and is believed to be correct, but is NOT guaranteed.

591 Colusa Ave., Yuba City, CA 95991 | 530.671.2770 | www.stromerrealty.com